

# Discover Advanced Projects™

If you are a project driven company, you will find this solution covers more ground, solves more pain points than any previous vertical solution for Microsoft Dynamics AX.

Watch the solution in action, online, today.



## SOLUTION FOR PROJECT DRIVEN COMPANIES

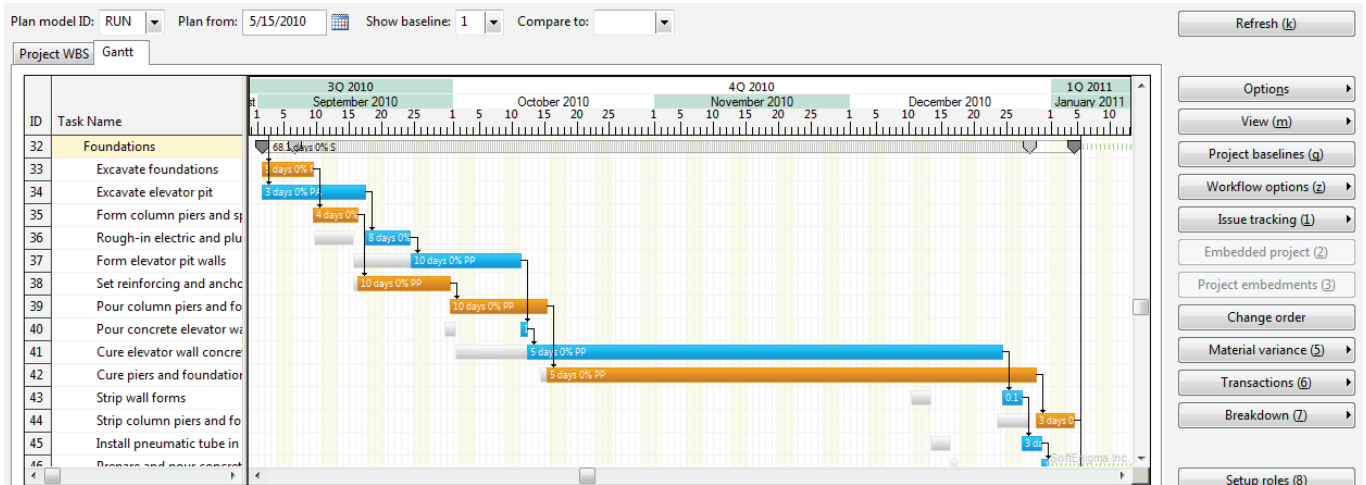
*With Microsoft Dynamics AX and Advanced Projects™, project driven companies can quote, plan, manage & execute, analyze and administer projects within a single integrated application.*

*This reduces total cost of ownership, cuts the level of disjointed information, reduces manual processes and eliminates the need to develop and maintain application interfaces.*

Advanced Projects™ is an industry solution for Microsoft Dynamics AX, Microsoft's enterprise ERP platform. The solution adds a wide range of mission critical features needed by project driven companies.



Advanced Projects™  
For Microsoft Dynamics AX



# Advanced Projects™ is designed to support the entire project life cycle

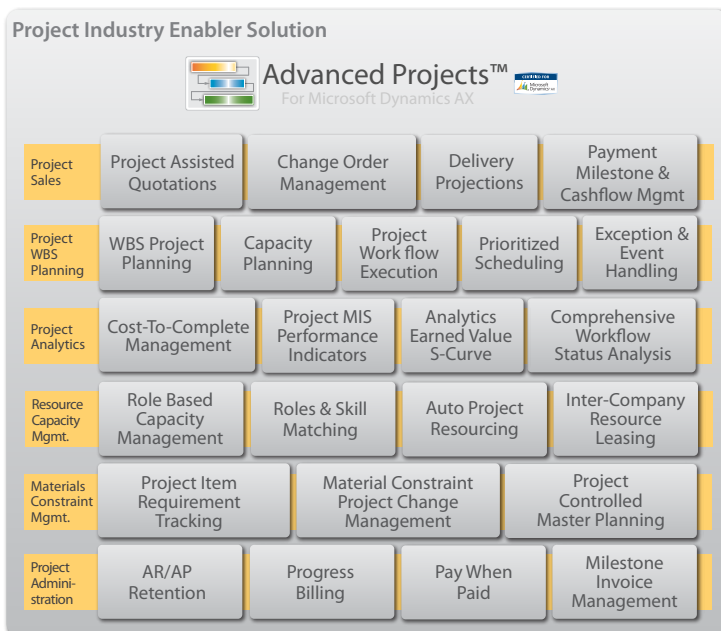
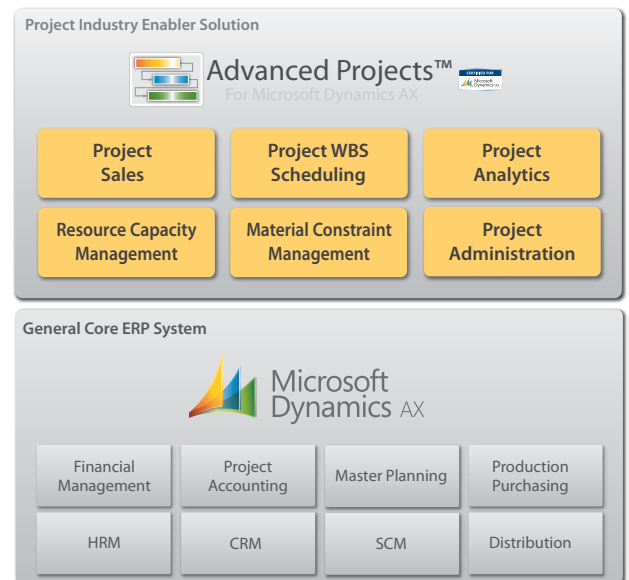


## Solution Achitecture

The solution is integrated into of Microsoft's top tier ERP system called Microsoft Dynamics AX.

If you already are familiar with Microsoft Dynamics AX, then Advanced Projects™ can best be described as Project III module. A natural extension of the native project accounting modules. The solution is build ontop of these modules and fully writtin in X++.

The solution features it's own advanced planning engine and do not require external solutons like Microsoft Project Server.



## Solution Feature Map

The solution combines project quoting, planning, resourcing, cash flow management, material handling, execution, workflows, MIS and more, into one single and integrated solution.

All elements that play a pivotal role for successful projects, built on one single platform, Microsoft Dynamics AX.

# Product features

## Project Planning and Scheduling

- Advanced project and resource/capacity planning with three distinct levels of capacity planning: Infinite, Leveling and Finite. This allows you to do finite planning with named resources or plan with unspecified (bulk) capacity, or a mix of the two, on your projects.
- Planning models, allowing you run planning simulations in parallel and assess impact of changes to resources, capacity and constraints across multiple projects at one time.

### Basic features:

- WBS task structured projects.
- Project milestone management.
- Advanced task predecessor/successor control.
- Task date constraint rules.
- Multiple role/resource assignments per task.
- Unit based role/resource load.
- Duration only tasks (no assignments)
- Define task by work or duration.
- Sub project embedment, which enables you to break up larger project and also link sub projects.
- Add notes and attachments.
- Standard, role and resources calendars, to define working hours, shifts, company holidays and personal time off.

## Project Quotation

- Powerful option for quoting fixed priced projects.
- Quote project by cost category for items, expense and hours, setting markup and discount for each.
- Allows you make multiple version of your quote to satisfy your customer.
- Plan and manage your payment milestones and cash flow for your project quotations.
- This feature also allows you manage your project cash flow after you stated your projects, and help you to compare the quoted price up against budgeted and actual cost.
- Build up your quotations with WBS projects, which can be imported, made from project templates or from scratch.
- Use projects to simulate scheduling and give your customer projected delivery dates and precise budget estimates.

## Change Order Management.

- Handle project change orders, from quotation, into planning and execution, in full coordination with the project from where it originates.
- Change orders comes a subset of the Advanced Projects quotation feature, where you can see the change order as micro-quotes within the original quote and project WBS.
- Change orders can be included or separated out when calculating cost-to-complete and overall performance numbers (Project MIS).

## Cash Flow Management

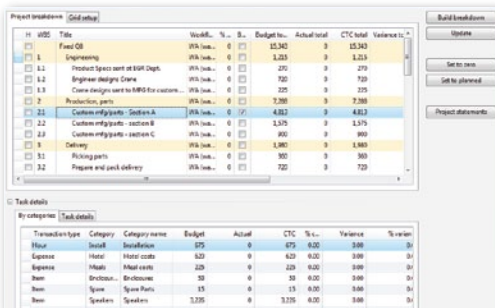
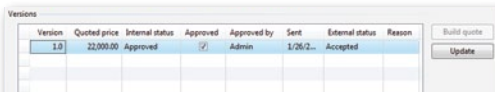
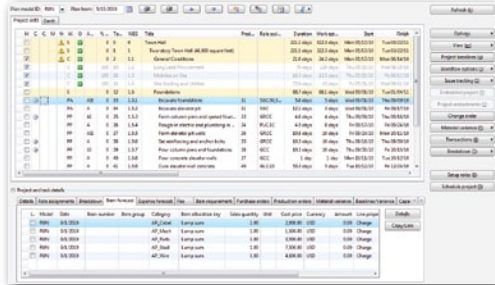
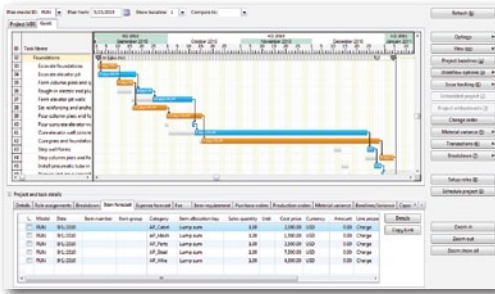
- Track your project cash flow starting at quote stage all the way to the end of the project.
- Generate and manage your payment milestones, link them into the project WBS task milestones and have the project engine automatically update them to follow the schedule.

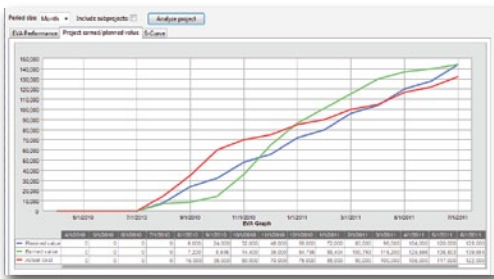
## Project MIS / Project Dashboard

- This feature especially targets senior management.
- Through this top level management can watch project indicators for financial and delivery performance.
- Monitor project cash flows and cash flow outlooks.
- Easily track capacity load outlooks for up to 12 month forward for you entire operation.

## Cost-To-Complete Management, Cost Break Down

- Break-down your project cost by WBS task and task/category of cost items, expenses and hours.
- Manage cost-to-complete cost budgets by task level for item, expenses and hours, or by category level with the cost split up in all the categories used the project.
- You can also add your own categories for cost outside the budget categories.



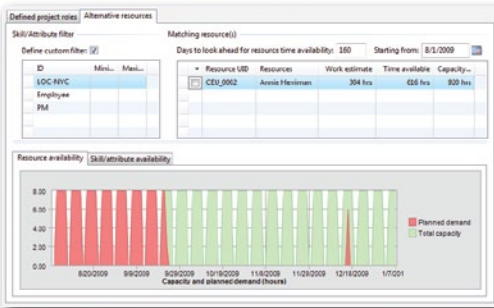


## Project Automation

- The unique ability to “run” your projects as workflow. This provides greater control over project execution and helps to maintain transparency as to who’s doing what and when.
- The ability for users to create workflow exception tasks on the fly, to catch errors and problems, and make them part of the project, workflow and schedule. No need for creating separate project issue list that competes with the project.
- Collect task status and actual time from users that will automatically promote the project workflows. No need for project managers to do statusing.
- Project Compacting gives option to provide a prioritized rescheduling of all active projects, with the extra option of auto-staffing projects.

## Project Material Management

- Advanced Project™ allow you to add items and expense lines to tasks, to plan project material consumption and expenses, using standard Project forecast.
- Automatically keep track of any Master Planning generated planned order, PO and production orders, related to any task.
- Continuously adjust the requirement dates to task scheduling.
- Project views for "Late delivery", "Early delivery", "Planned orders" and "Item requirements."
- Offer the option to automatically apply date constraints to project tasks in case of late delivery or material constraints.



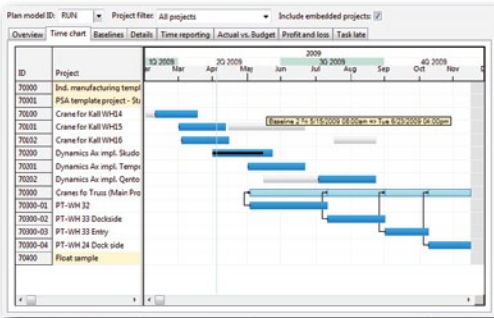
## Change Request Management/Issue Tracking

- Track any issue or change request (CR) that comes during execution of projects effectively.
- Issues/CRs are linked to projects, project tasks and resource/employee.
- Full tracking of issue/CR change history (field level).
- Issue level notification to one or more users, employees or external email addresses, when status changes or when issue/CR otherwise is changed.
- Optional to link issue/CR to other related issues/CRs.



## Advanced Graphical Charts

- Advanced Project™’s advanced time and Gantt charts for better overview and managing projects. Central status screens oversee all active projects and resources.



## Project Reporting

- Combined T&E (time & expense) and status reporting, allows automated project statusing. The solution collects task T&E and status from users/resources that automatically promote the project workflows. No need for project statusing, easing the burden for the project owner/manager.
- Role based resource and capacity allocation
- Advanced Project™ manages resources and/or capacity assignments via project roles which is a unique and powerful feature for Advanced Project™.
- This new way of managing resource on your project, makes it much simpler to assign and change resources or capacity. It uses an advanced skill matrix to match up resource to roles, and can suggest which resources would be the best to perform a certain role.
- This also enables Advanced Project™ to auto assign the right resources to projects at the beginning or whenever the project is rescheduled.

## Project Analytics

- Use of Earned Value and S-Curve analysis on projects to judge real-world performance.
- Critical Path Management to facilitate smarter choices when running and editing projects.

## Import & Export

- Import and export Microsoft Project files into Microsoft Dynamics AX (XML format supported). Use this option to migrate projects, create templates or if you want to send and present a project to a customer.

## More Information

- Web : [www.adeaca.com](http://www.adeaca.com)
- Email : [sales@adeaca.com](mailto:sales@adeaca.com)
- Phone : +1 404 492 8700



ISV/Software Solutions